



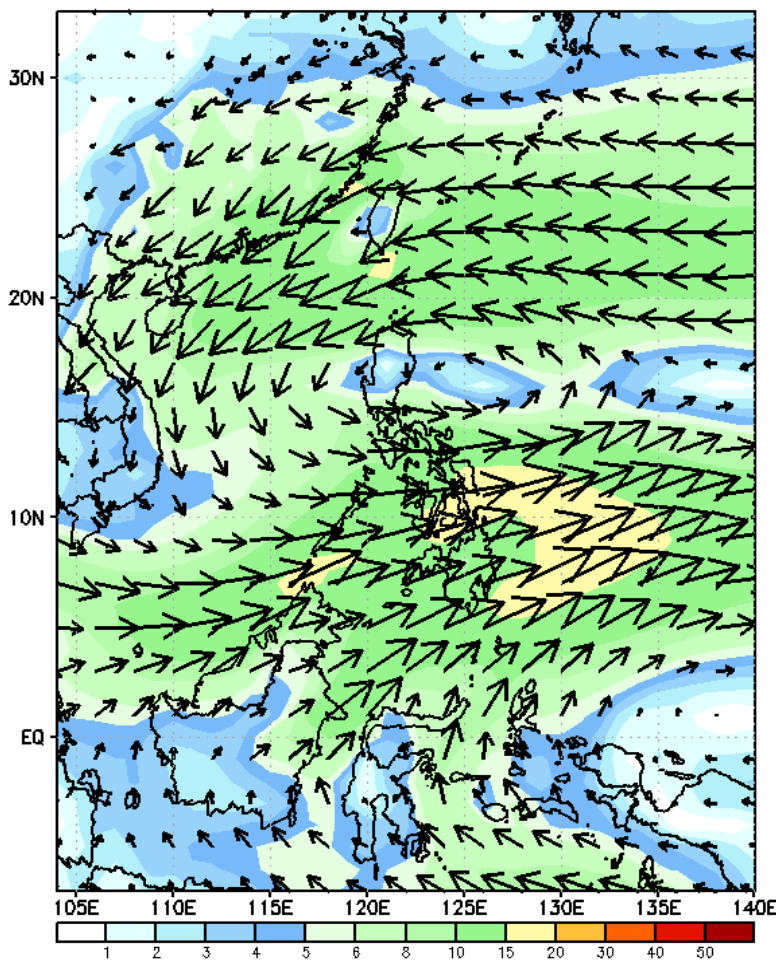
Week 1 & Week 2 Forecast for the Philippines using GEFS Model



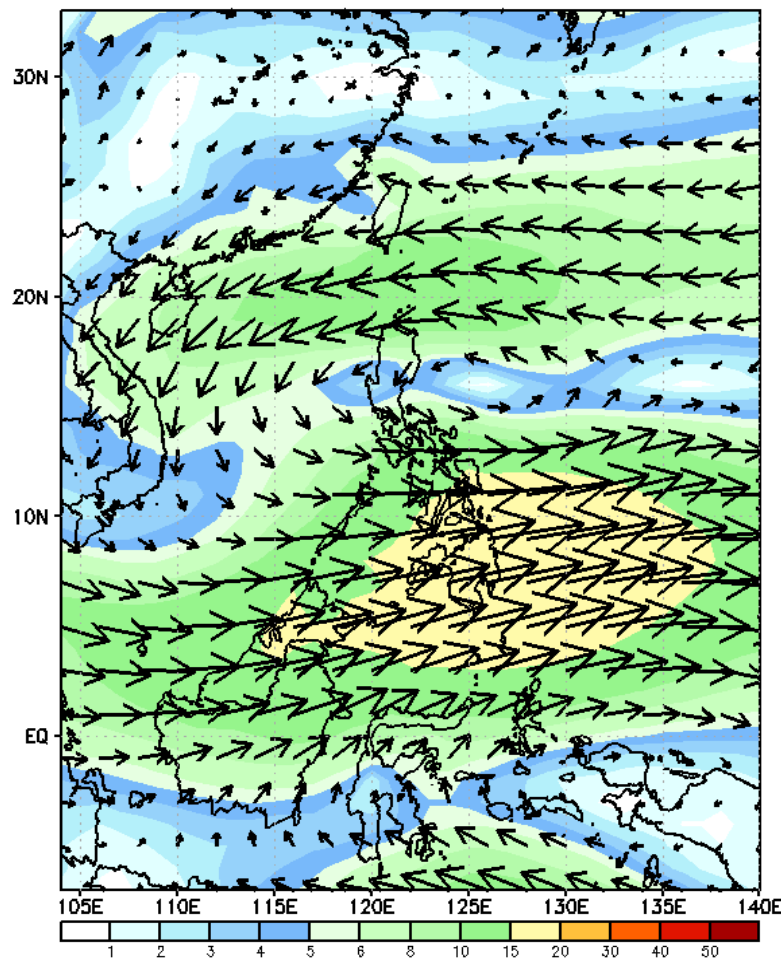
GEFS Week-1 Wind Forecasts:

Week 1: Oct 21-27, 2024

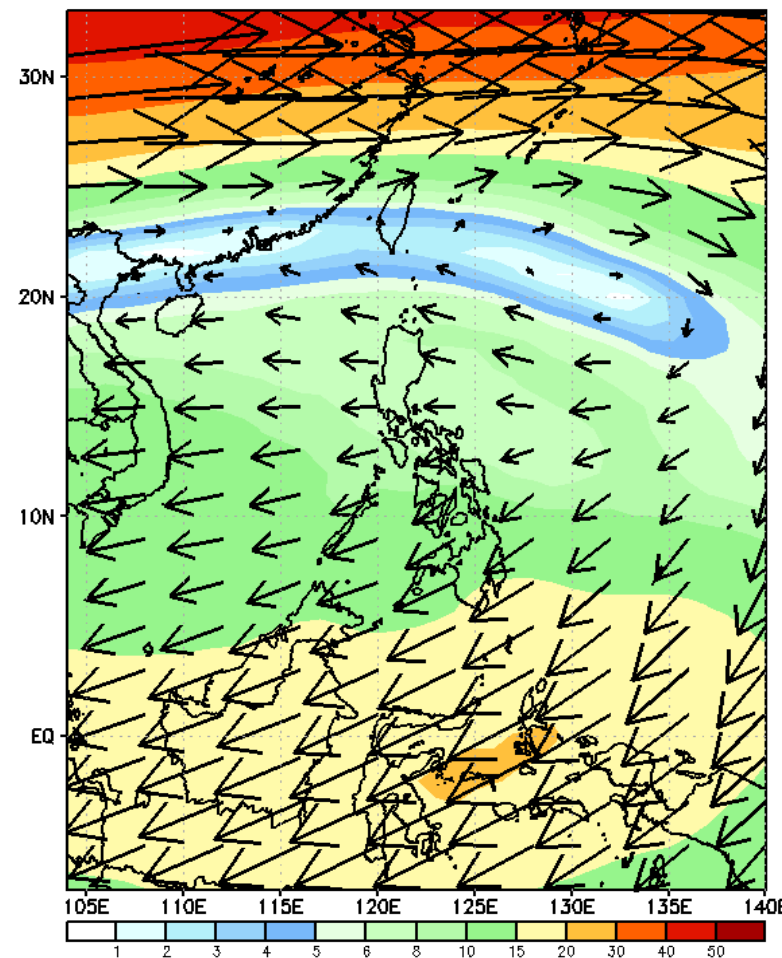
GEFS Week-1 850-hPa Wind Total
Valid: 20241021 - 20241027



GEFS Week-1 700-hPa Wind Total
Valid: 20241021 - 20241027

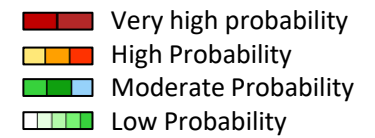


GEFS Week-1 200-hPa Wind Total
Valid: 20241021 - 20241027



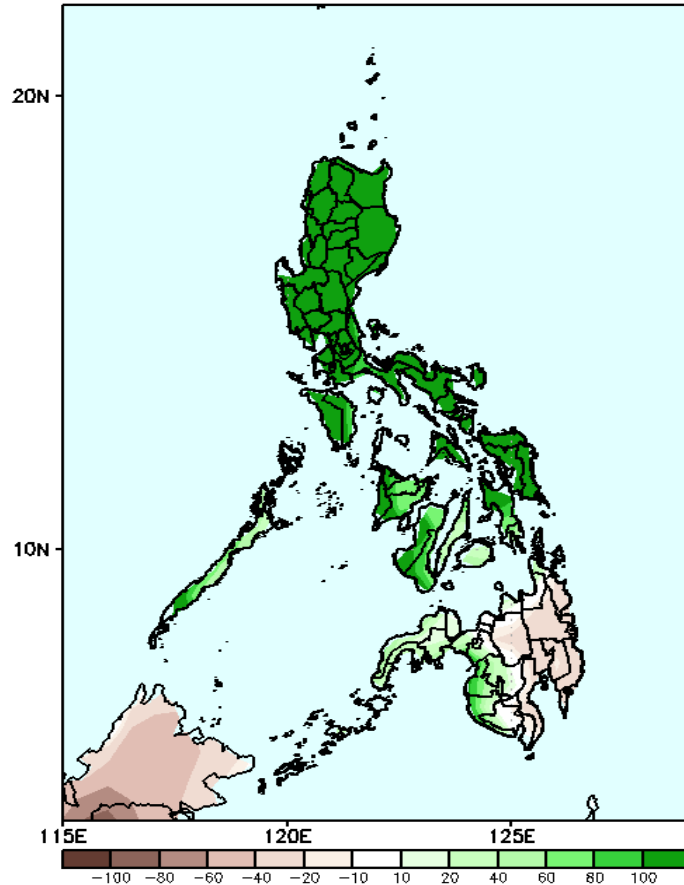
Easterly windflow affecting Northern Luzon, South to southwesterly windflow affecting the rest of the country.

Precipitation Anomaly and Exceedance Probability > 25/50 mm



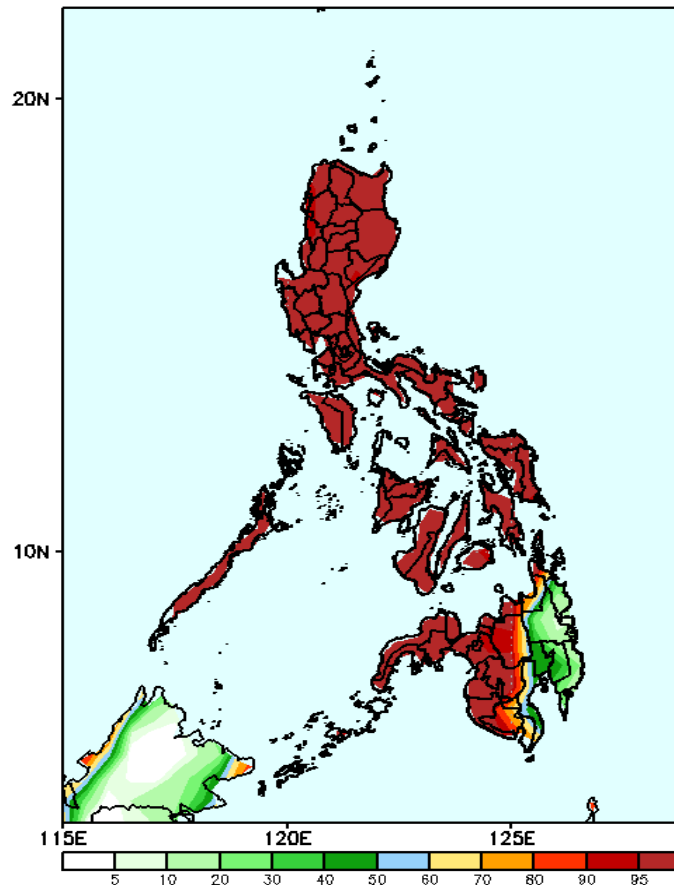
Week 1: Oct 21-27, 2024

GEFS Week-1 Precip Anomaly
Valid: 20241021 - 20241027



Increase of Rainfall of more than 100mm is likely in most parts of Luzon and Visayas; 20-80mm in Central Visayas and western Mindanao while Rainfall deficit of 20-50mm rainfall is expected for the rest of Mindanao.

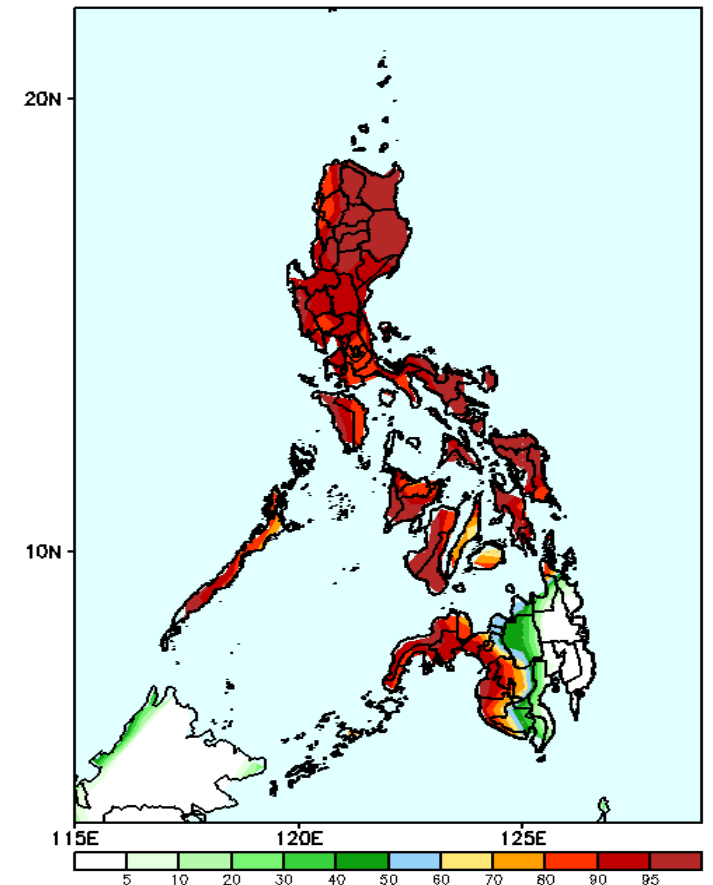
GEFS Week-1 Exceedance Prob. > 25mm
Valid: 20241021 - 20241027



Probability to Exceed 25mm

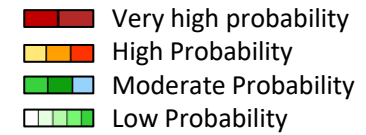
- High to very high over most parts of Luzon, Visayas, northern and western Mindanao and Agusan & Lanao del Norte.
- Moderate to high over the rest of Mindanao.

GEFS Week-1 Exceedance Prob. > 50mm
Valid: 20241021 - 20241027



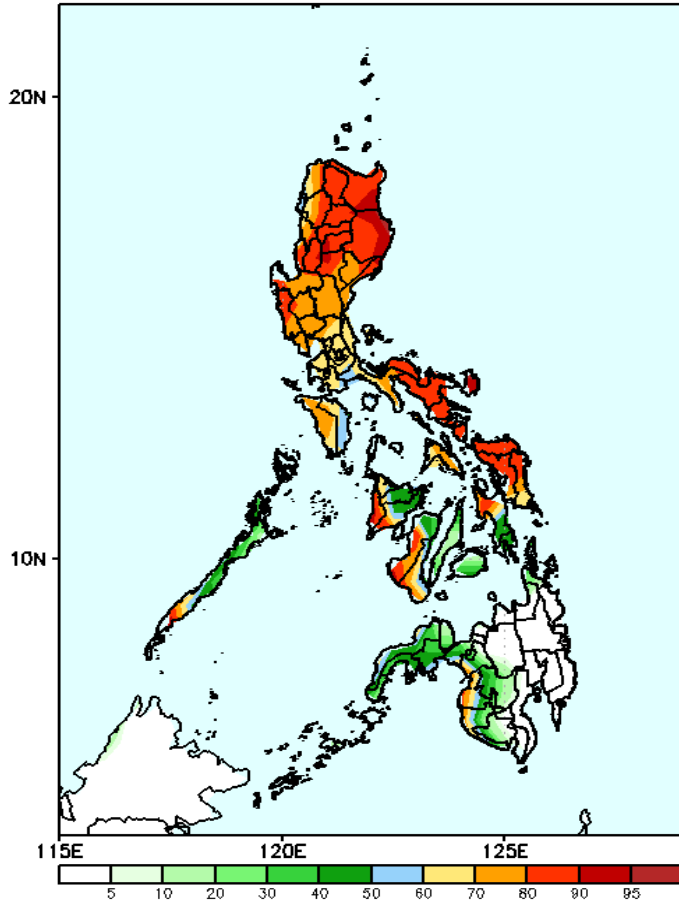
- High to very high over Luzon, Visayas and Western Mindanao;
- Moderate to high over Misamis Oriental, Surigao del Norte, western part of Lanao Provinces and North Cotabato, southeastern part of Bukidnon and South Cotabato;
- Low over the rest of Mindanao.

Exceedance Probability > 100/150/200 mm



Week 1: Oct 21-27, 2024

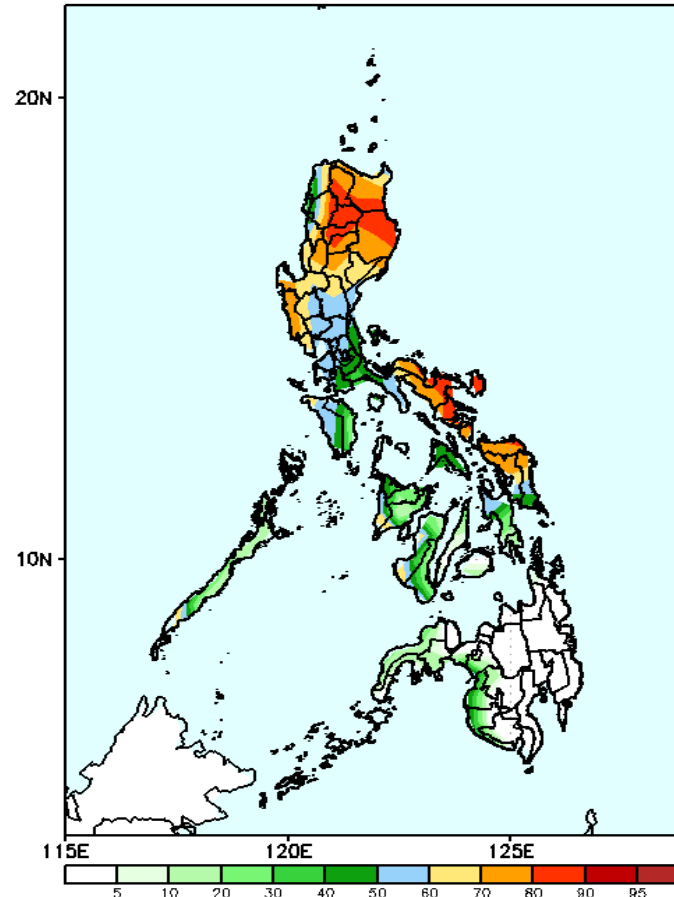
GEFS Week-1 Exceedance Prob. > 100mm
Valid: 20241021 - 20241027



Probability to Exceed 100mm

- Moderate to a high over most of Luzon, southern part of Palawan, Western and Eastern Visayas, NIR and the western sections of Lanao Provinces, Maguindanao and Sultan Kudarat;
- Low to moderate over the rest of Palawan and Zamboanga Peninsula;
- Low over Central Visayas and the rest of Mindanao.

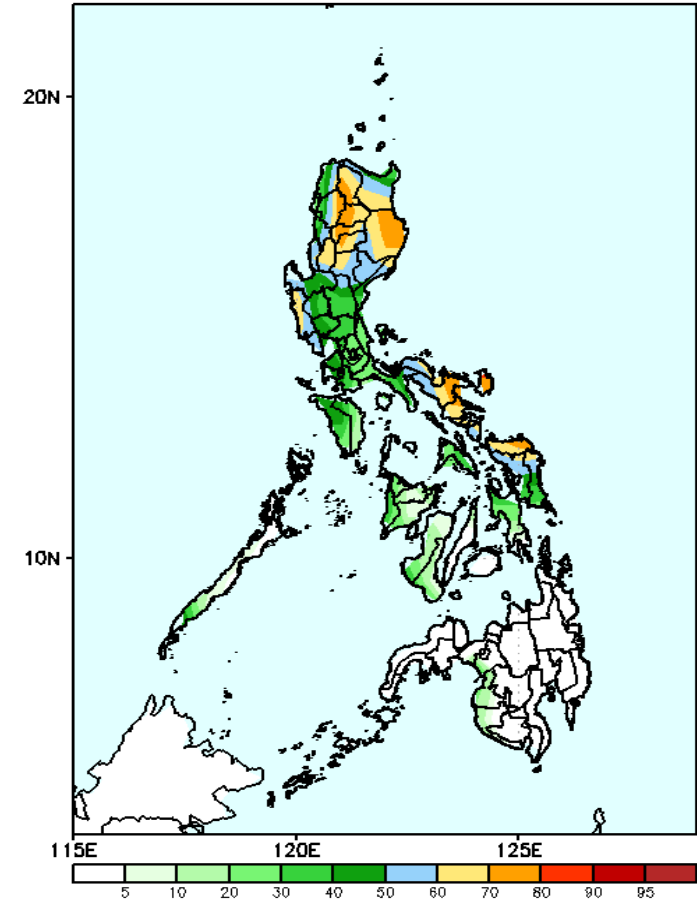
GEFS Week-1 Exceedance Prob. > 150mm
Valid: 20241021 - 20241027



Probability to Exceed 150mm

- Moderate to a high over most of Luzon, southern part of Palawan, Antique, western part of Iloilo and Negros Occidental and Samar Provinces;
- Low over the rest of the country.

GEFS Week-1 Exceedance Prob. > 200mm
Valid: 20241021 - 20241027



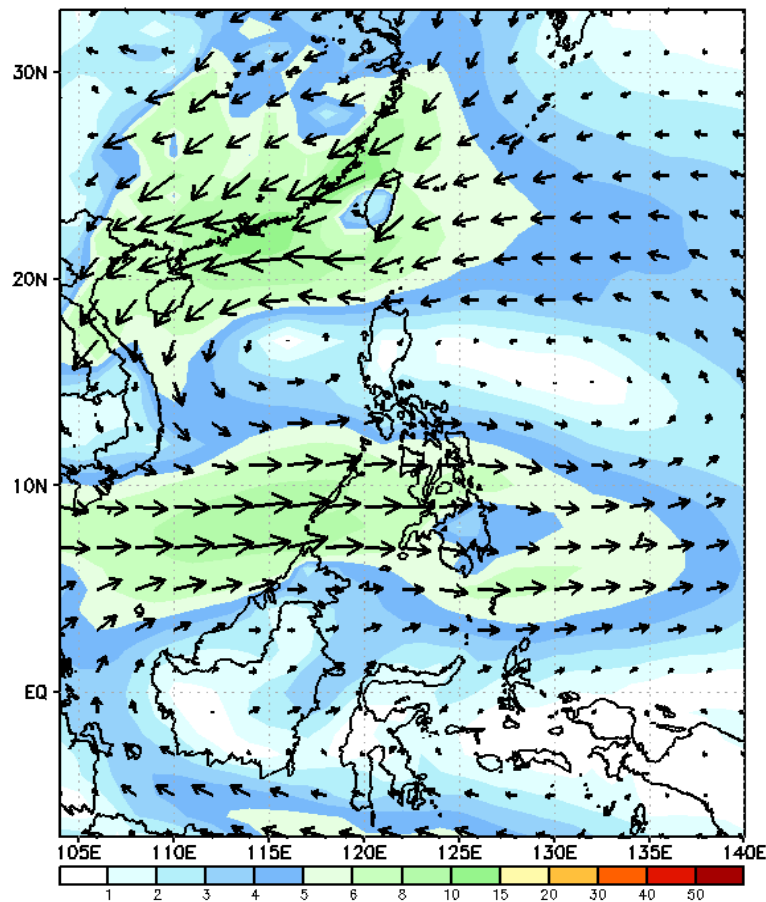
Probability to Exceed 200mm

- Moderate to a high over Northern Luzon, Zambales, Bataan, Bicol Region and Samar Provinces;
- Low to moderate over the rest of Luzon;
- Low over the rest of the country.

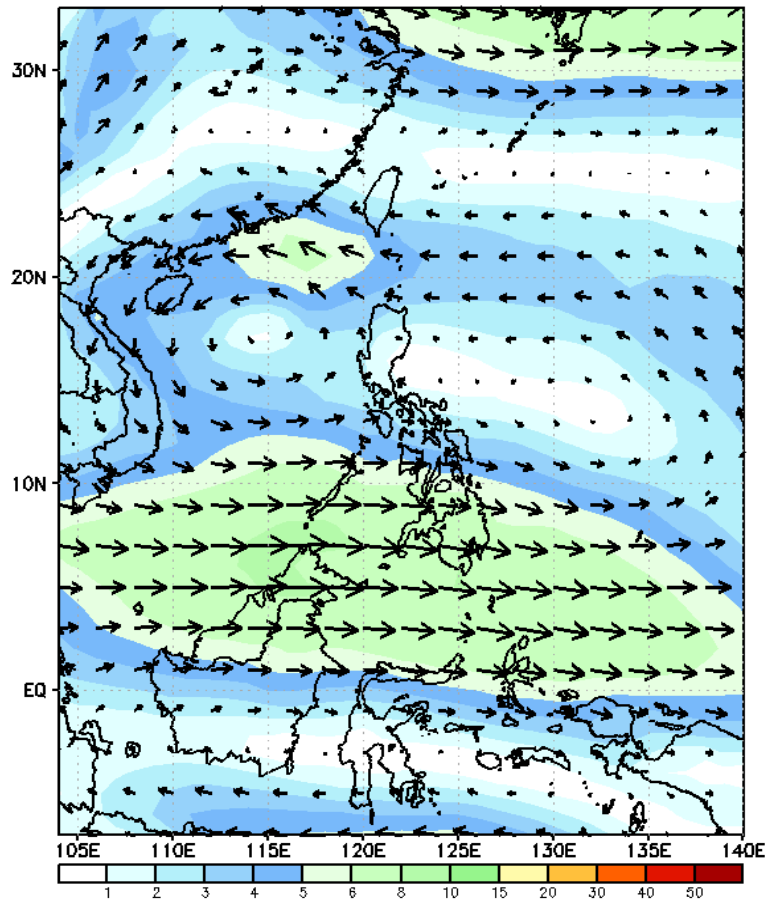
GEFS Week-2 Wind Forecasts:

Week 2: Oct 28- Nov 03, 2024

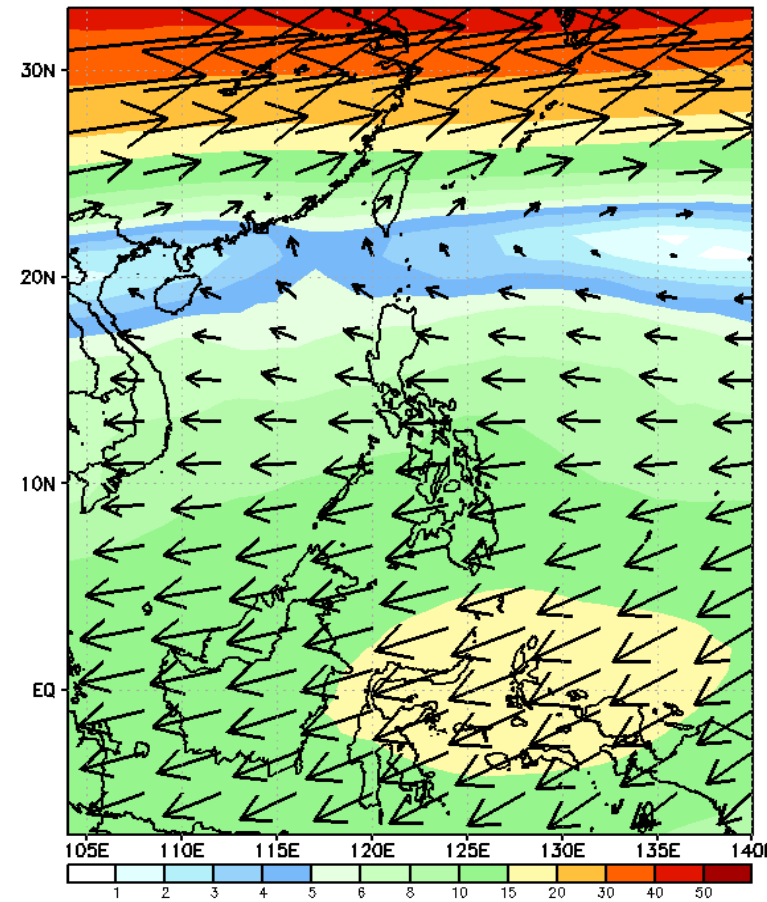
GEFS Week-2 850-hPa Wind Total
Valid: 20241028 - 20241103



GEFS Week-2 700-hPa Wind Total
Valid: 20241028 - 20241103

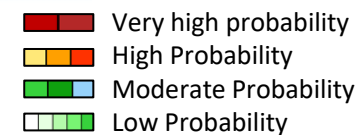


GEFS Week-2 200-hPa Wind Total
Valid: 20241028 - 20241103



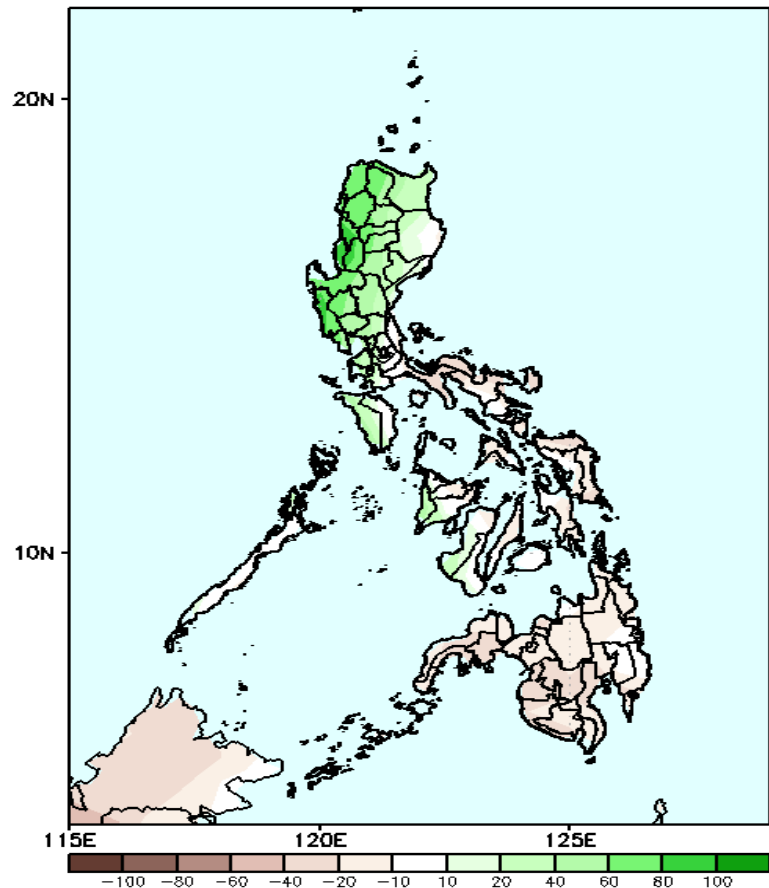
Northeasterly to easterly windflow is forecasted to affect Northern and Central Luzon. Westerly windflow will likely affect Visayas and Mindanao.

Precipitation Anomaly and Exceedance Probability > 25/50 mm



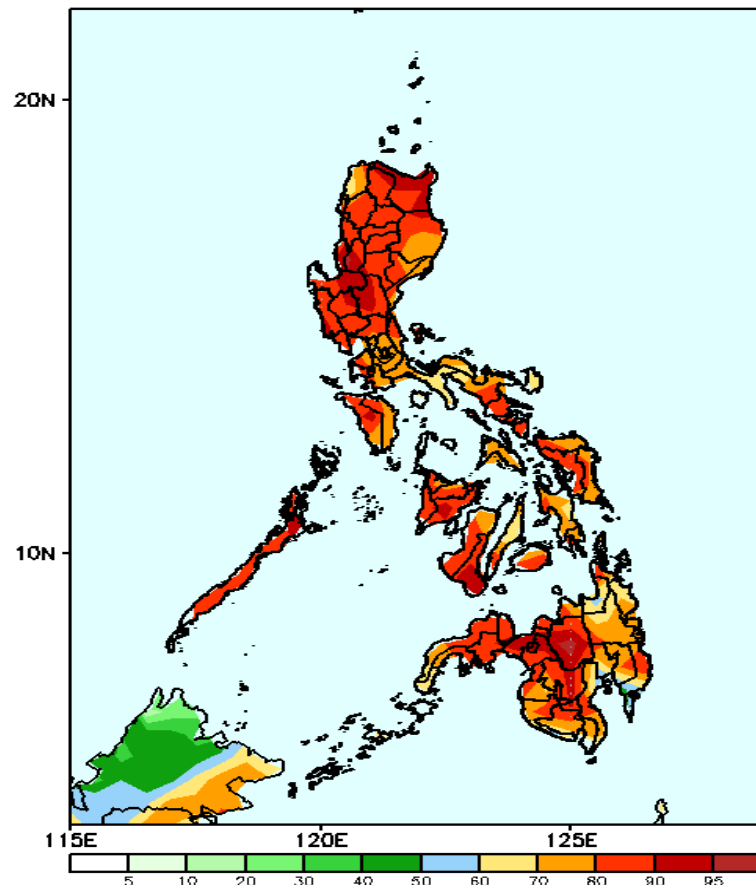
Week 2: Oct 28- Nov 03, 2024

GEFS Week-2 Precip Anomaly
Valid: 20241028 - 20241103



Increase of rainfall of 20-60mm is likely in most parts of Luzon and western Visayas while Rainfall deficit of 10-40mm rainfall is expected for the rest of Visayas and most parts of Mindanao.

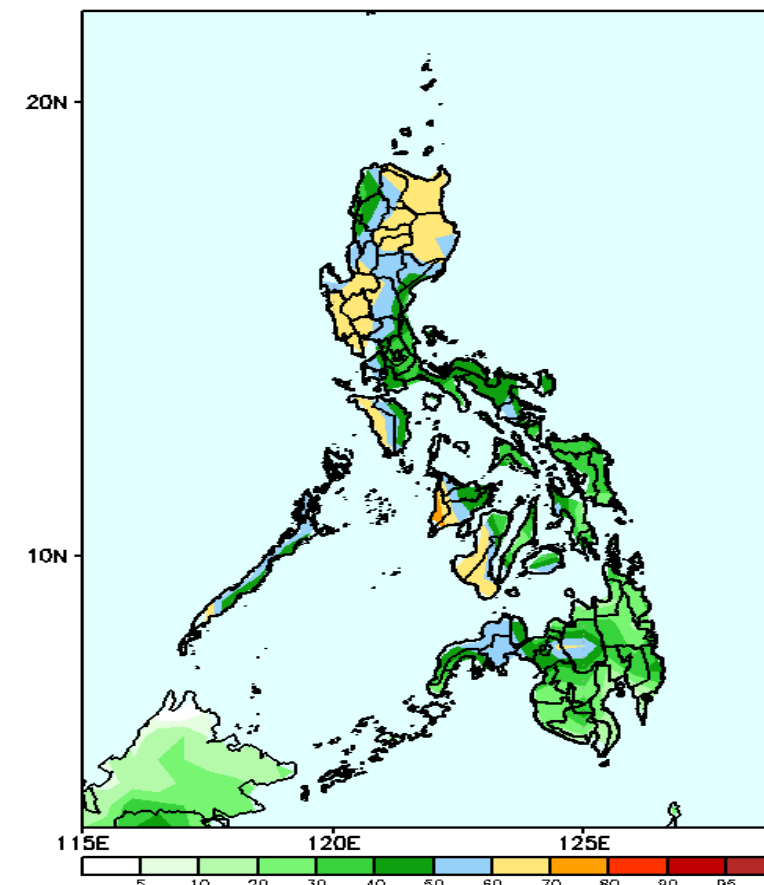
GEFS Week-2 Exceedance Prob. > 25mm
Valid: 20241028 - 20241103



Probability to Exceed 25mm

- High to very high over most parts of the country

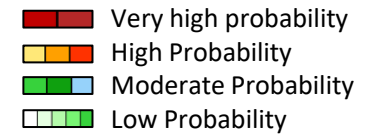
GEFS Week-2 Exceedance Prob. > 50mm
Valid: 20241028 - 20241103



Probability to Exceed 50mm

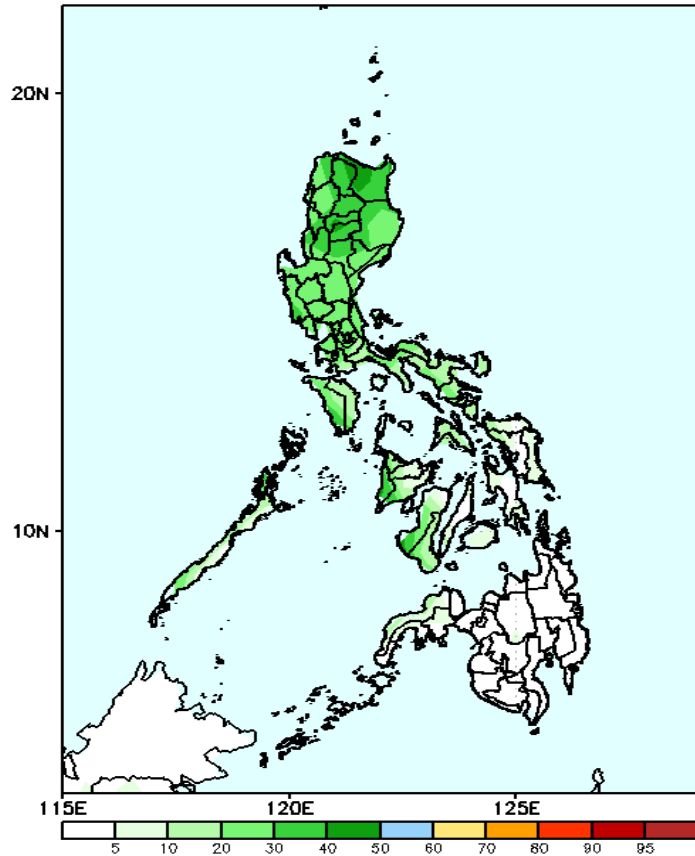
- Moderate to high over most parts of Luzon, Western Visayas, NIR, Bukidnon, and Lanao del Sur;
- Low to moderate over the rest of the country.

Exceedance Probability > 100/150/200 mm



Week 2: Oct 28- Nov 03, 2024

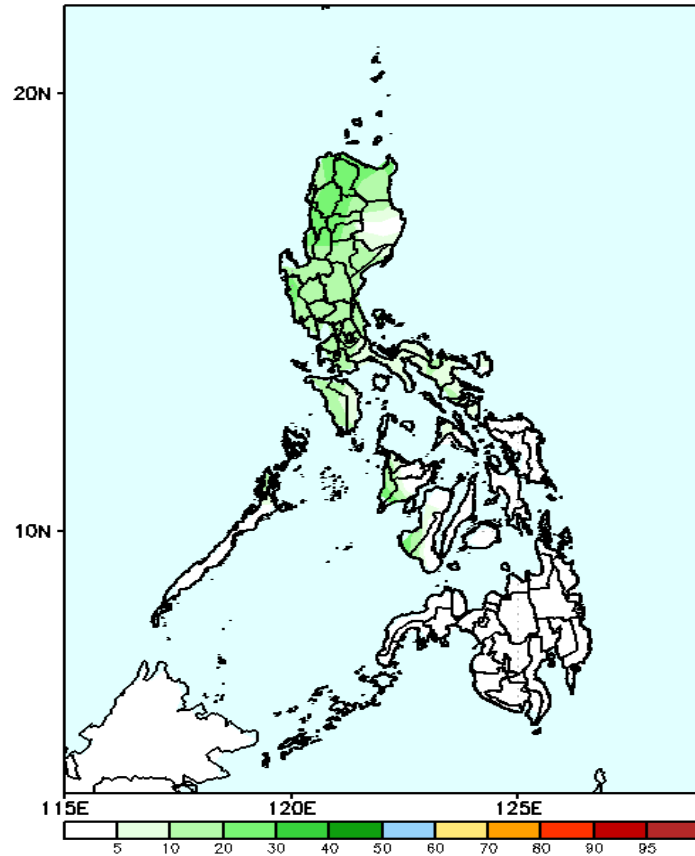
GEFS Week-2 Exceedance Prob. > 100mm
Valid: 20241028 - 20241103



Probability to Exceed 100mm

- Low to moderate over Luzon;
- Low over the rest of the country.

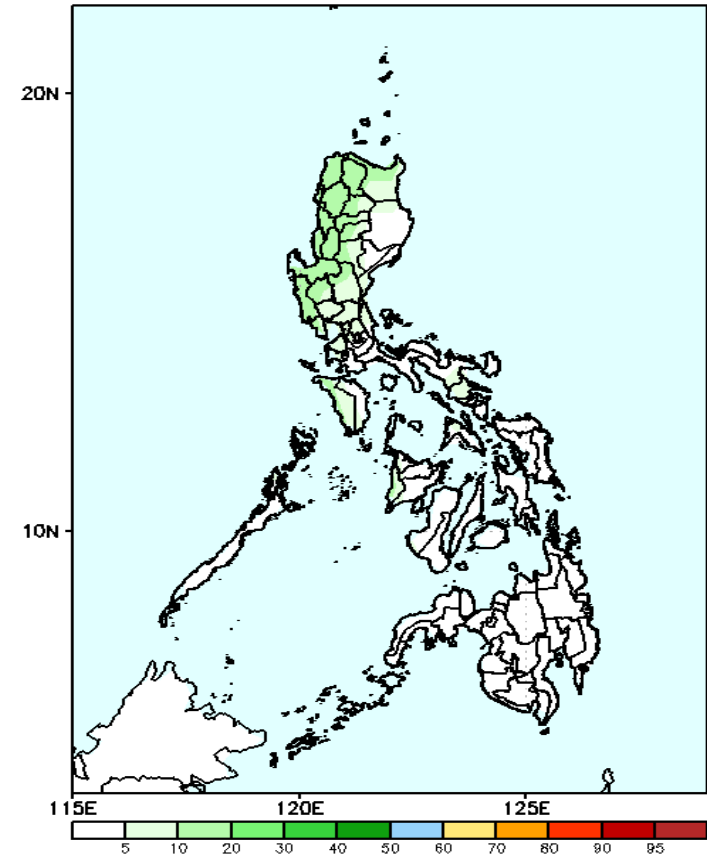
GEFS Week-2 Exceedance Prob. > 150mm
Valid: 20241028 - 20241103



Probability to Exceed 150mm

- Low across the country.

GEFS Week-2 Exceedance Prob. > 200mm
Valid: 20241028 - 20241103

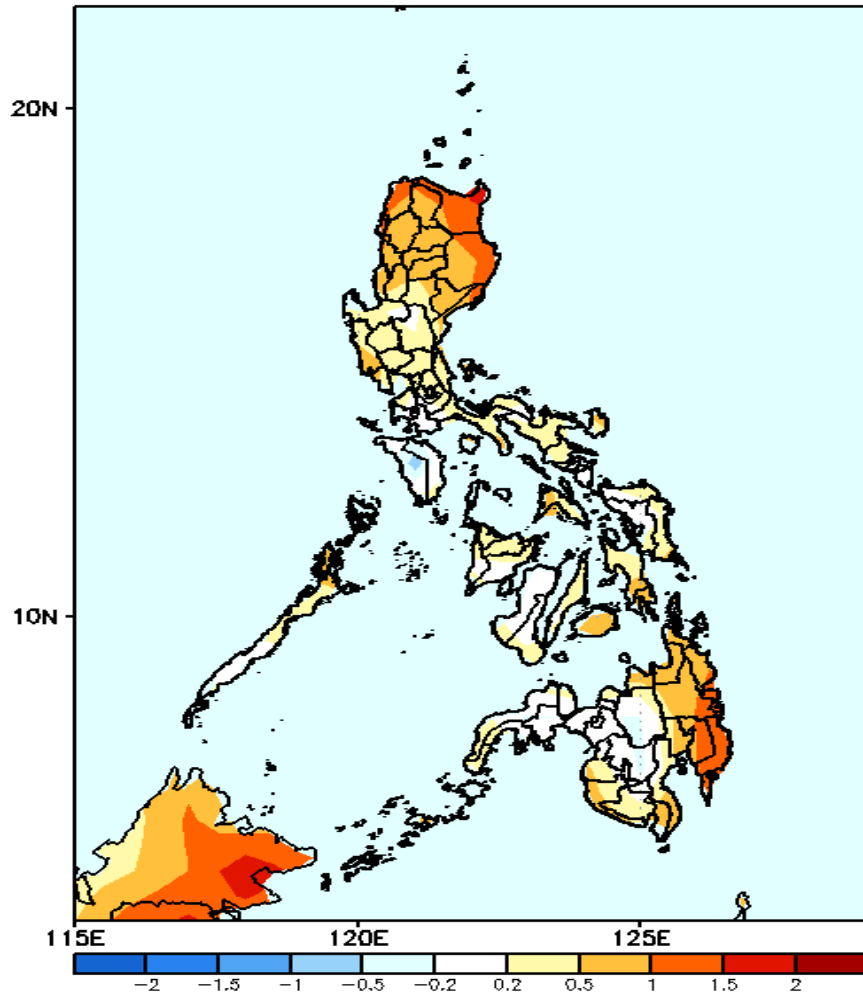


Probability to Exceed 200mm

- Low across the country.

GEFS Week-1 & 2 Forecasts: T2m Anomaly

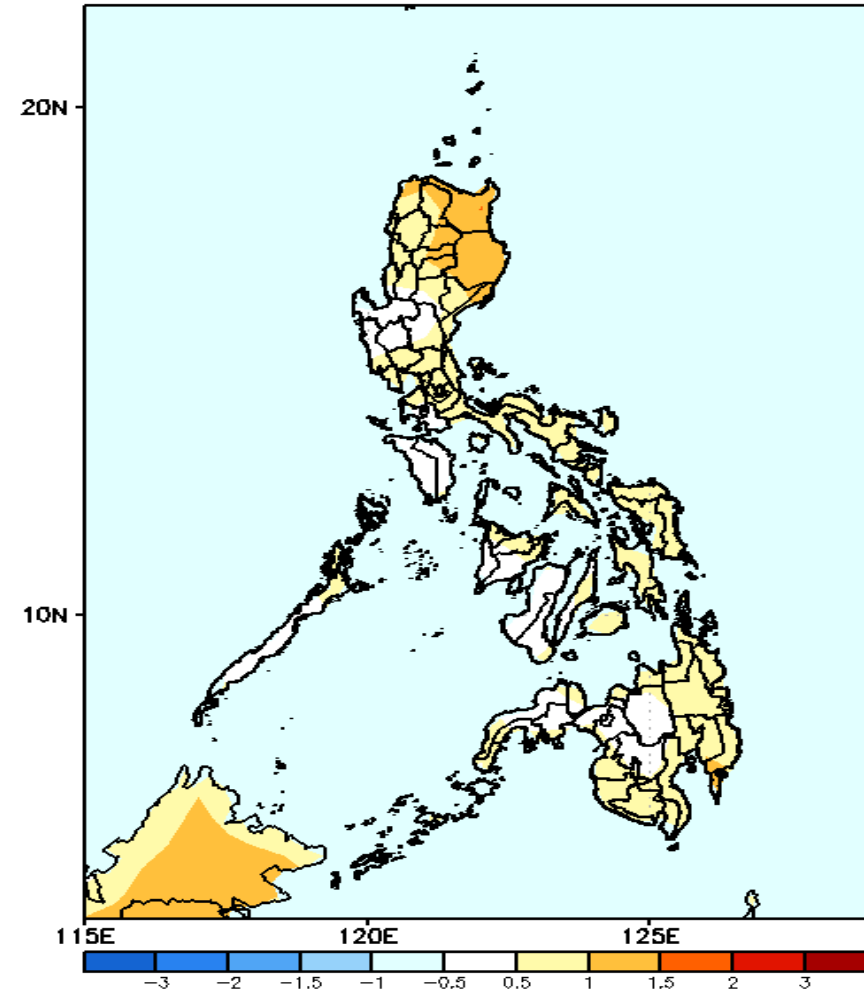
GEFS Week-1 T2m Anomaly
Valid: 20241021 - 20241027



2m Temperature Week 1: Oct 21-27, 2024

Near to warmer than average surface air temperature will likely be experienced in most parts of the country.

GEFS Week-2 T2m Anomaly
Valid: 20241028 - 20241103



2m Temperature Week 2: Oct 28- Nov 03, 2024

Near to slightly warmer than average surface air temperature will likely be experienced in most parts of the country.

